



In the spirit of their patron, St. Francis, the Sisters have long cultivated the Marycrest campus to evoke inspiration and reflection. In 1940 they erected Our Lady of Grace statue in a sunken garden with "a charming lily pond" at the rear of the Motherhouse. They later replaced the pond with a rose garden, hauling

buckets and wheelbarrows of dirt from elsewhere on the site. In 1942 a statue of the Sacred Heart of Jesus was erected on a small rock mound near the northwest corner of the Motherhouse.



Mary Therese Anstey/Historitecture

Statue of the Sacred Heart of Jesus, installed in 1942.

their Order's patron saint facing toward the street.

Between 1958 and 1963, the Sisters consulted with landscape designer Jack Harenburg, who suggested the planting of a wide variety of

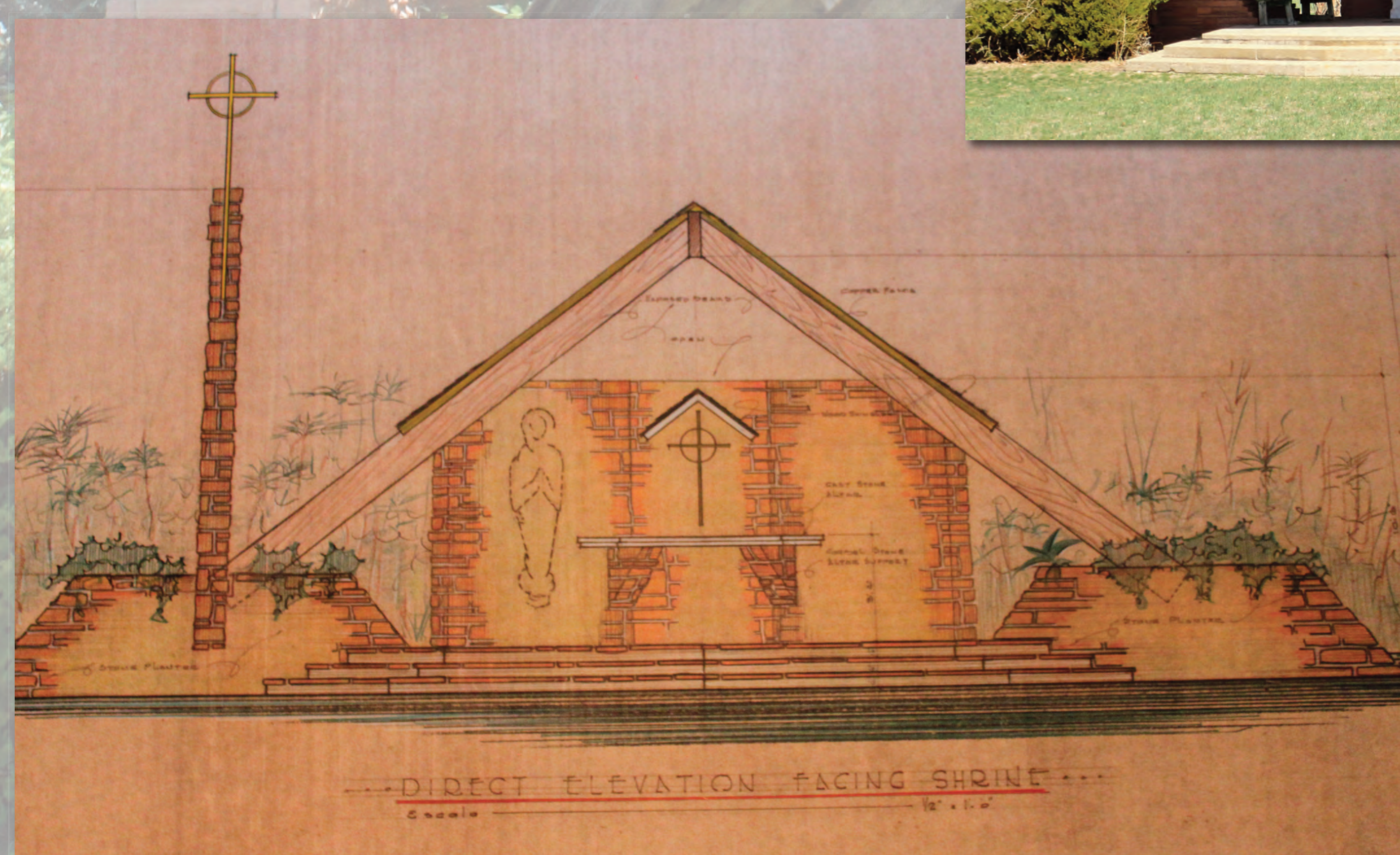
other tree species, including Ponderosa pines, crab apples, catalpas, Scotch pines, blue Pfitzers junipers, elms, lindens, hackberries, pinyons, maples, white pines, and birches. In 1963 the Sisters added the landscape's most impressive feature, Our Lady of Lourdes Shrine, designed by architect Henry J. De Nicola.

During the late 1950s and early 1960s, the Sisters continued their improvements. The St. Francis statue near the southwest corner of the campus was erected in response to the threat of Interstate 70 cutting through the campus. After much prayer and the subsequent realignment of the free-way, the Sisters expressed their gratitude with a depiction of



Mary Therese Anstey/Historitecture

Henry J. De Nicola's 1963 Our Lady of Lourdes Shrine as planned and as it currently exists.



Henry J. De Nicola, "Proposed Shrine for Marycrest Motherhouse," 1963